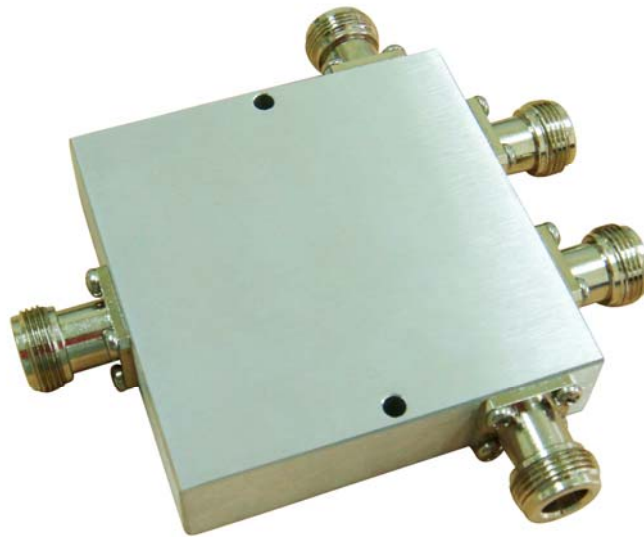


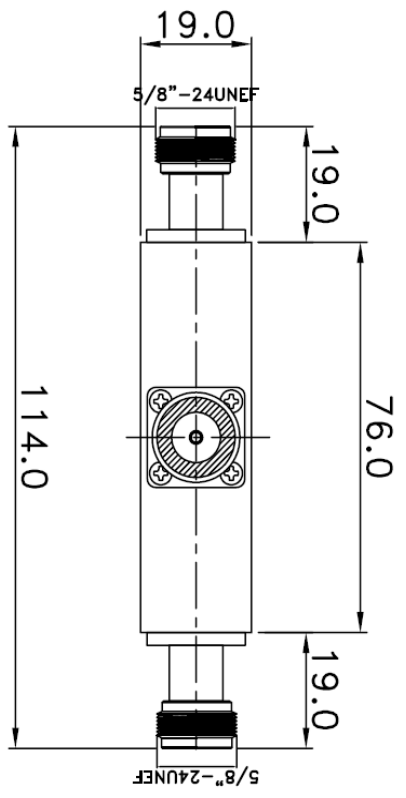
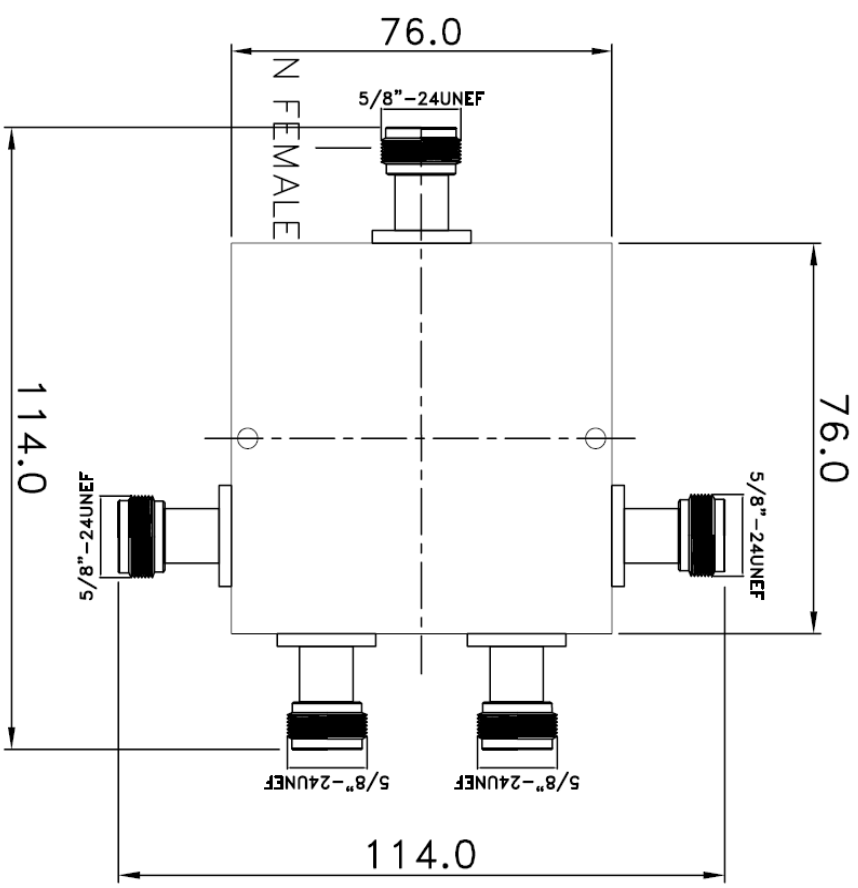
700-2700MHz 1 TO 4 WAYS SPLITTER FOR N FEMALE



Specification		
Model No.	SP-0727-03	
Description	1 TO 4 Ways Splitter	
Frequency Range (MHz)	700 -2700MHz	
Insertion Loss (dB)	$\leq 7.2$	
Amplitude Balance (dB)	$\leq 0.3$	
Phase Balance	$5^\circ$	
Standing Wave	VSWR (in)	$\leq 1.5$
	VSWR (out)	$\leq 1.5$
Isolation (dB)	$\geq 22$	
Power (W)	$\geq 30$	
Dimension (mm)	L114 x W114 x H19mm	
Port Connectors	N Female	
N.W (g)	325g	

REV	DESCRIPTION	DRAWN	DATE

700-2700MHZ 1 TO 4 WAYS SPLITTER FOR N FEMALE



7	Power (W) : $\geq 30$
6	Port Connectors : N FEMALE
5	Isolation (dB) : $\geq 22$
4	Phase Balance : $5^\circ$
3	Amplitude Balance (dB) : $\leq 0.3$
2	Insertion Loss (dB) : $\leq 7.2$
1	Frequency Range (MHz) : 700-2700 MHz
NO	Description

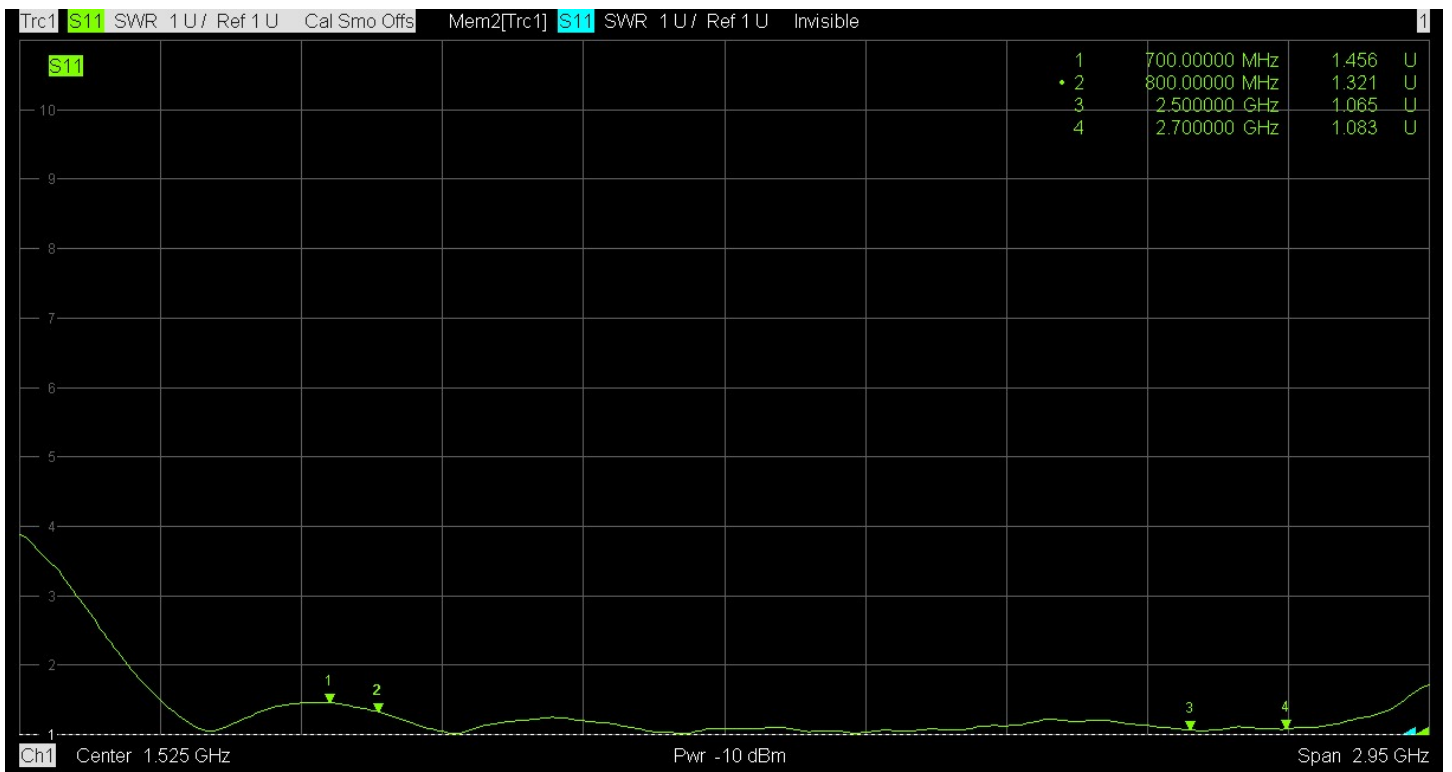
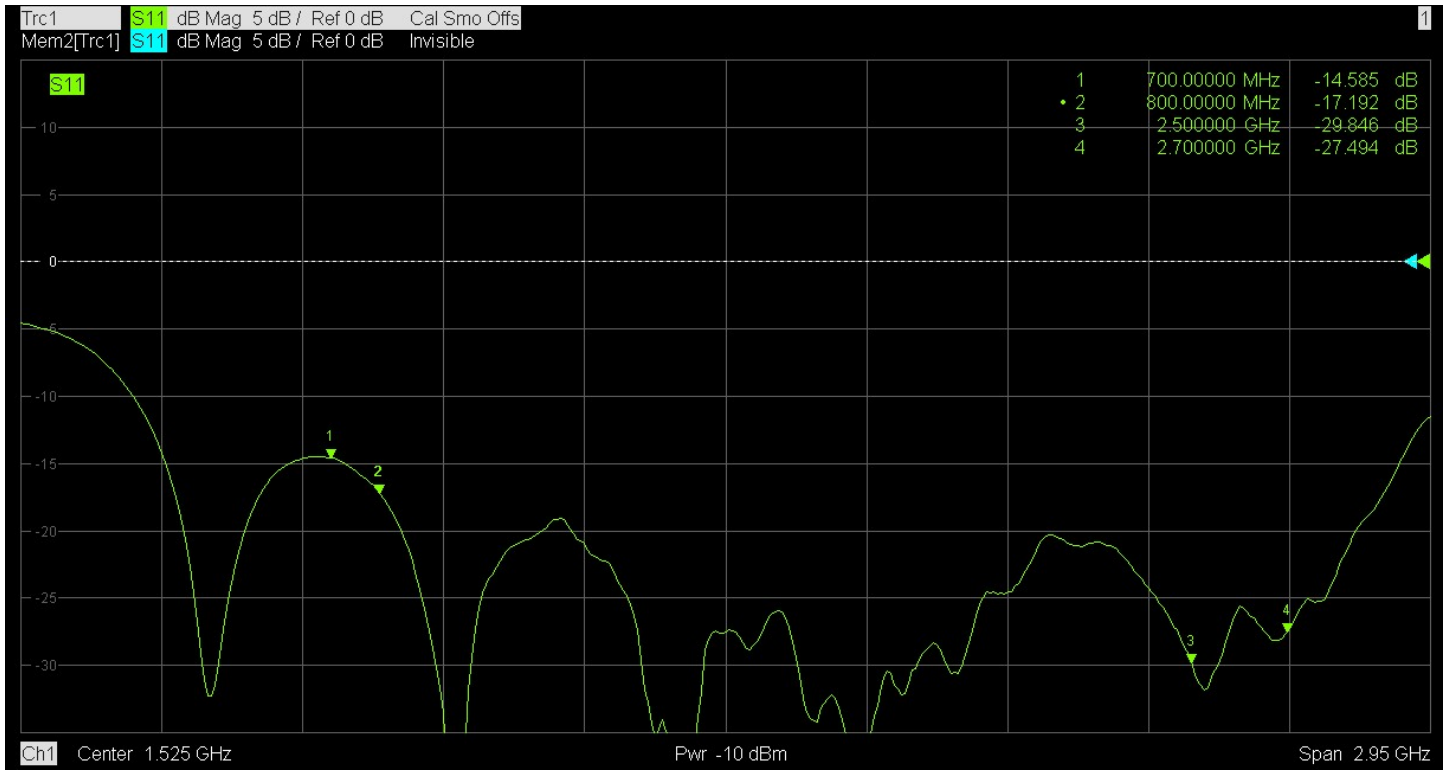
UNLESS OTHERWISE SPECIFIED  
 1 REMOVE ALL BURRS  
 2 BREAK ALL CORNERS & EDGES CO.15 MAX.  
 3 CHAMFER 1ST & LAST THREADS 45°  
 4 DIAMETERS ON COMMON CENTERS  
 TO BE CONCENTRIC WITHIN 0.1 TLR  
 5 ALL DIMENSIONS ARE AFTER PLATING.

* MAJOR DIMENSION			
SCALE	5/1	UNIT	MM

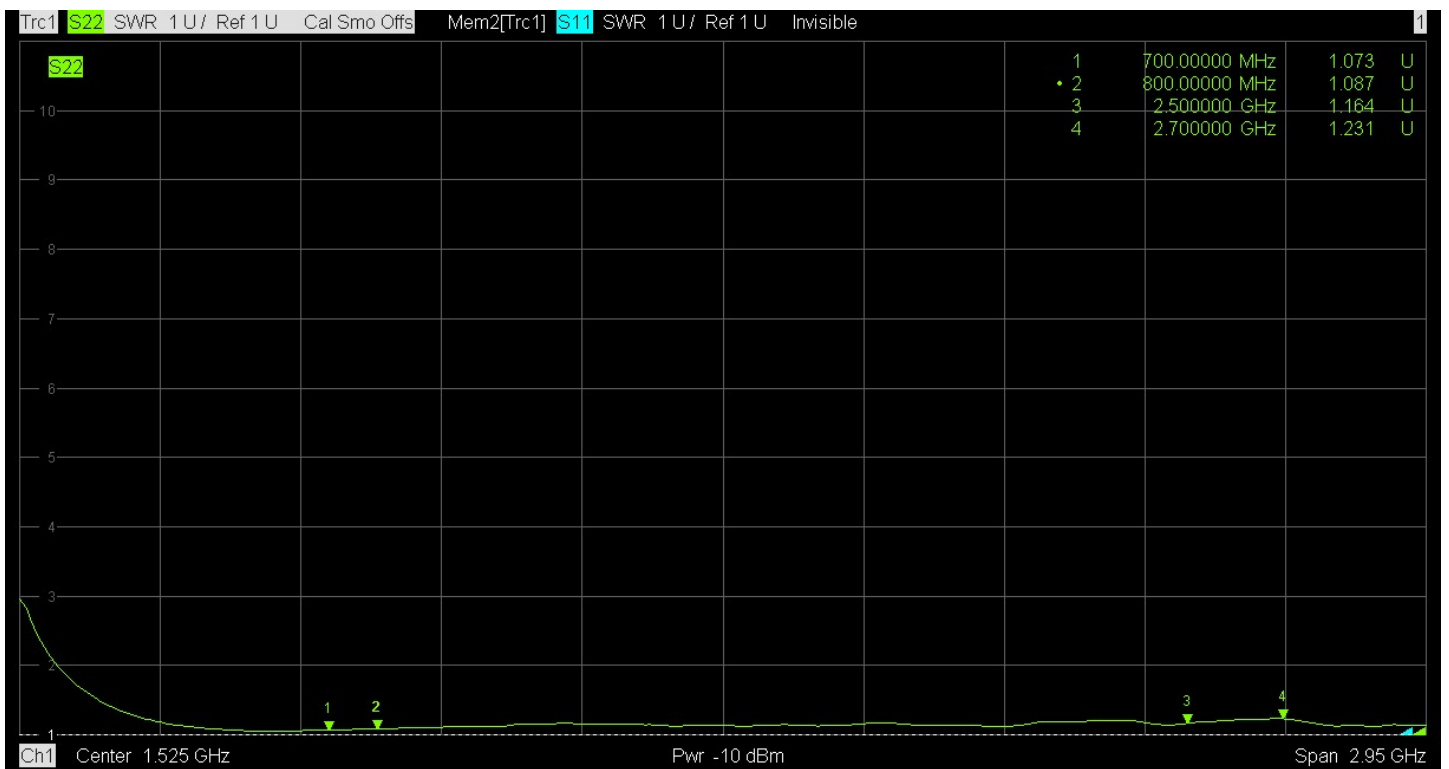
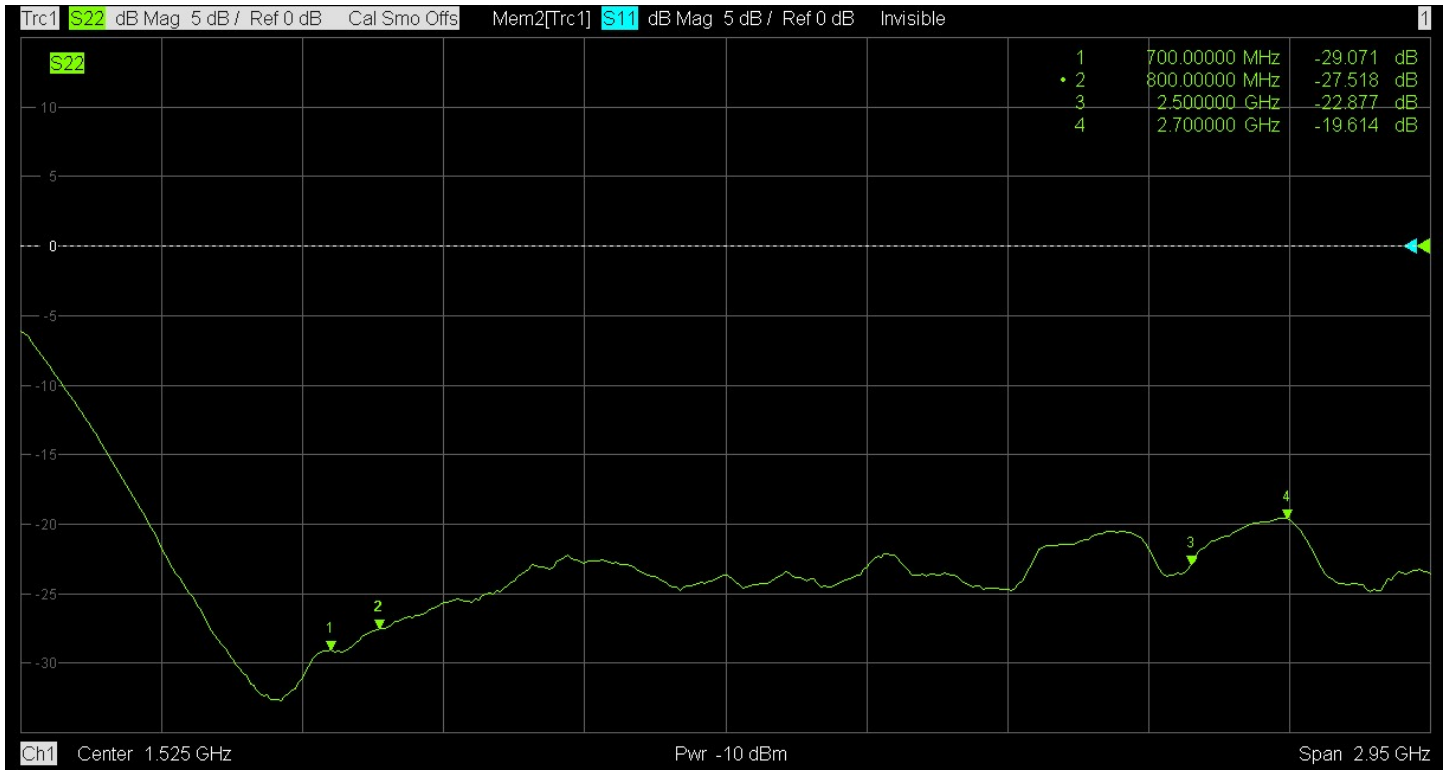
APPROVED	
CHECKED	
DRAWN	andrew
DRAWN DATE	03/07/04

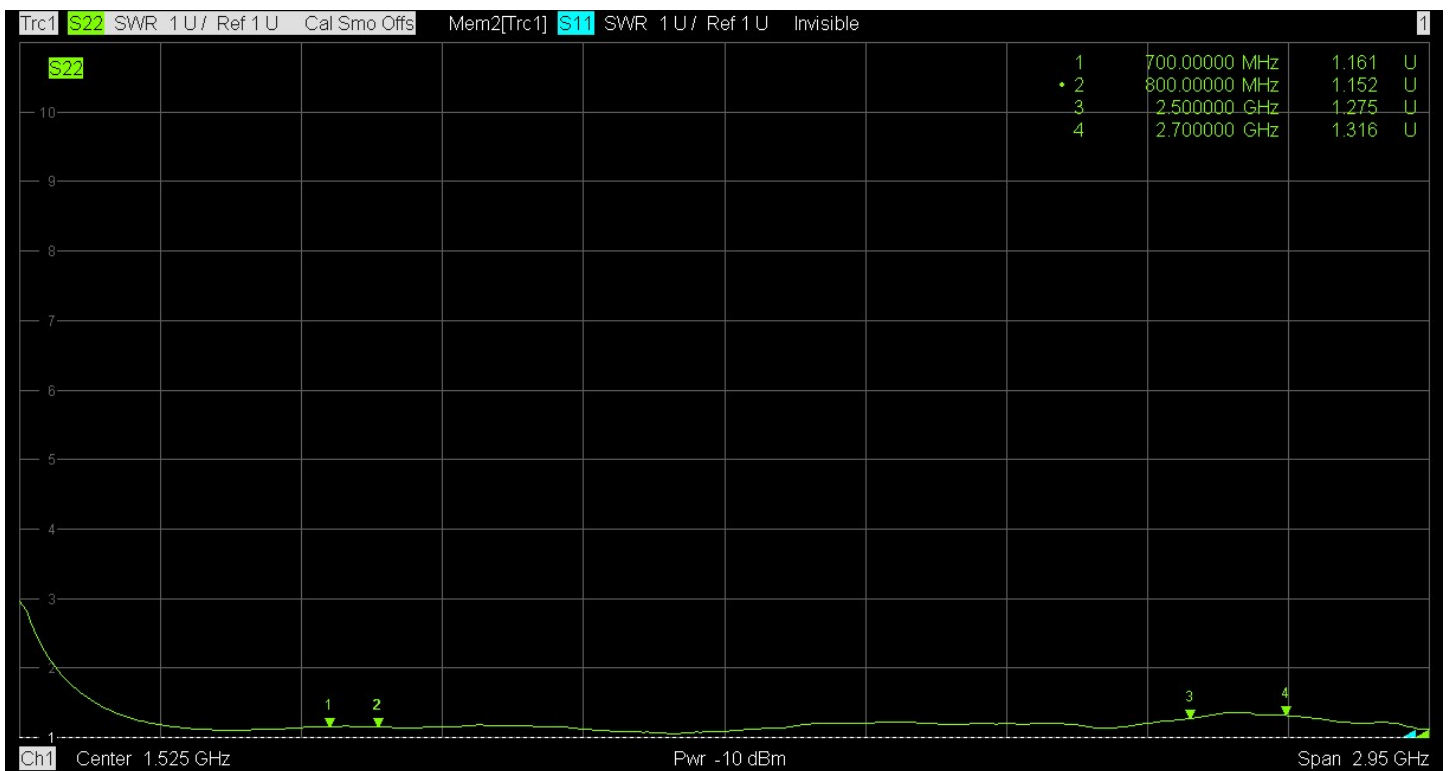
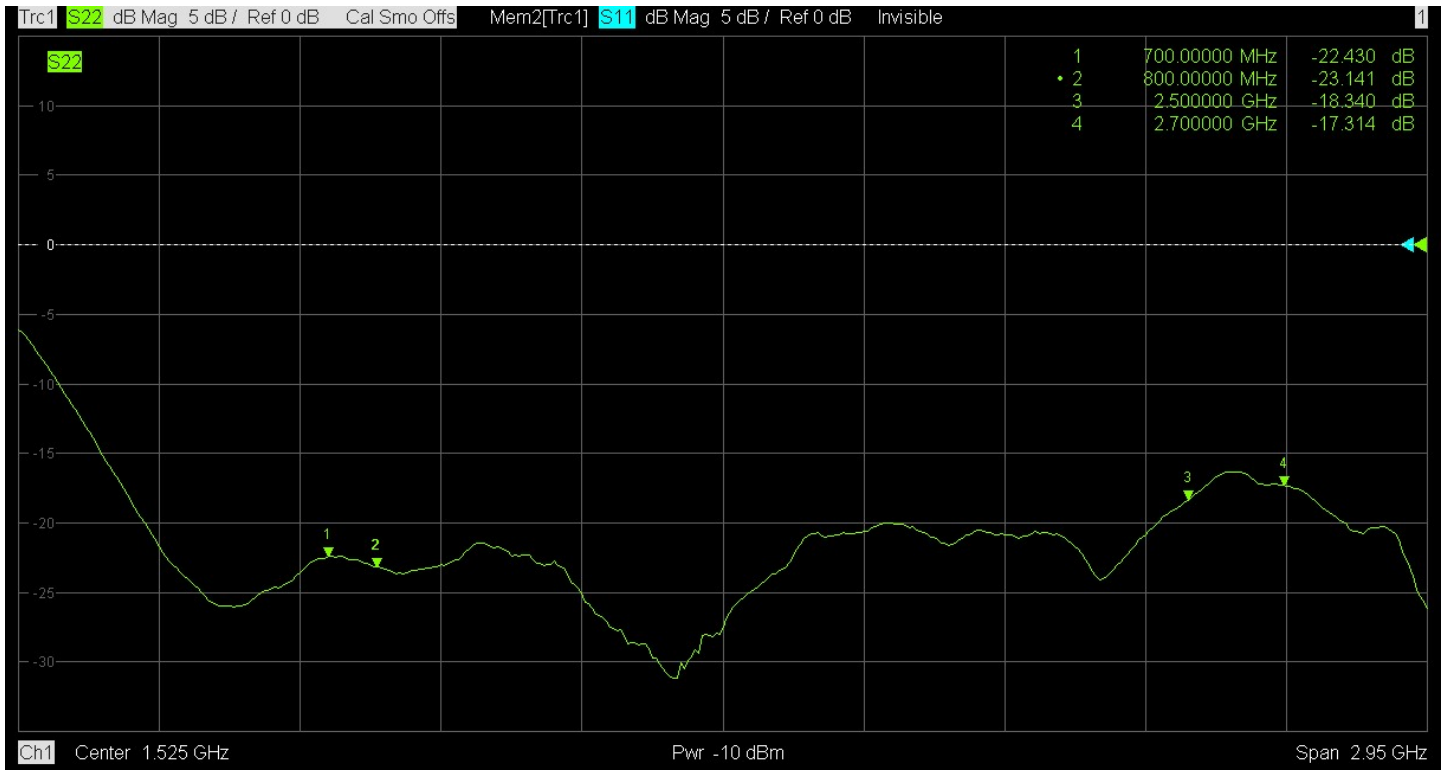
TITLE	
700-2700MHz 1 TO 4 WAYS SPLITTER FOR N FEMALE	
DRAWING NO.	SP-0727-03
REV	A
FILE NO.	

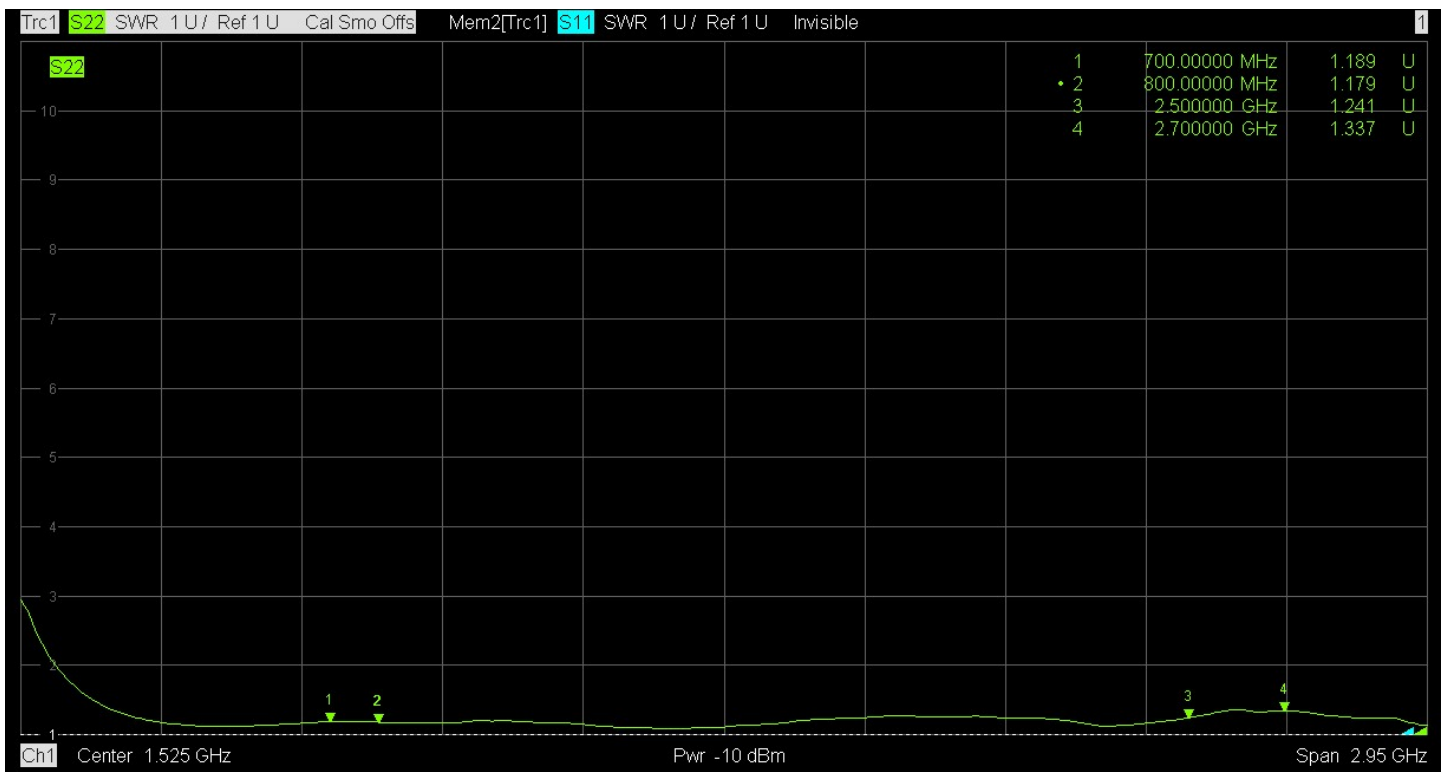
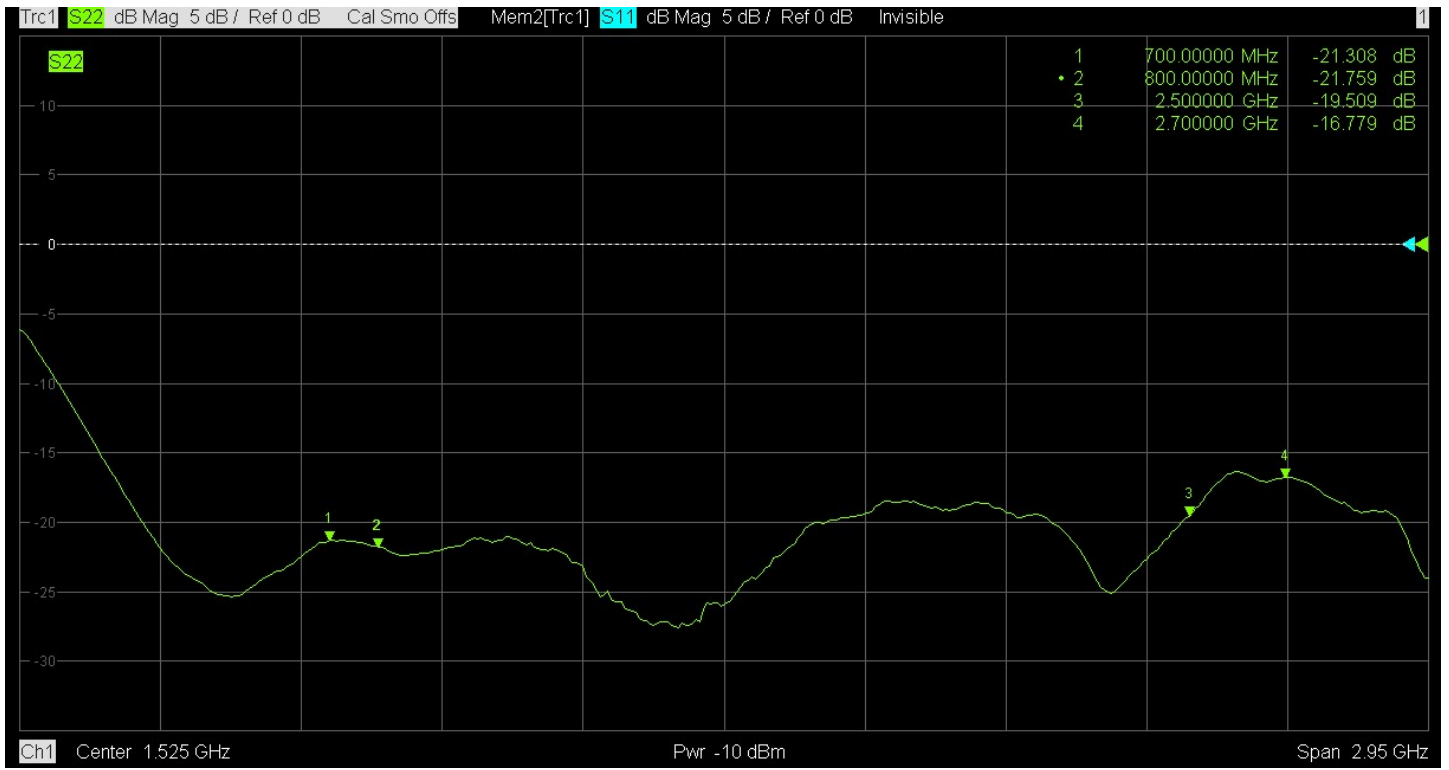
# S11

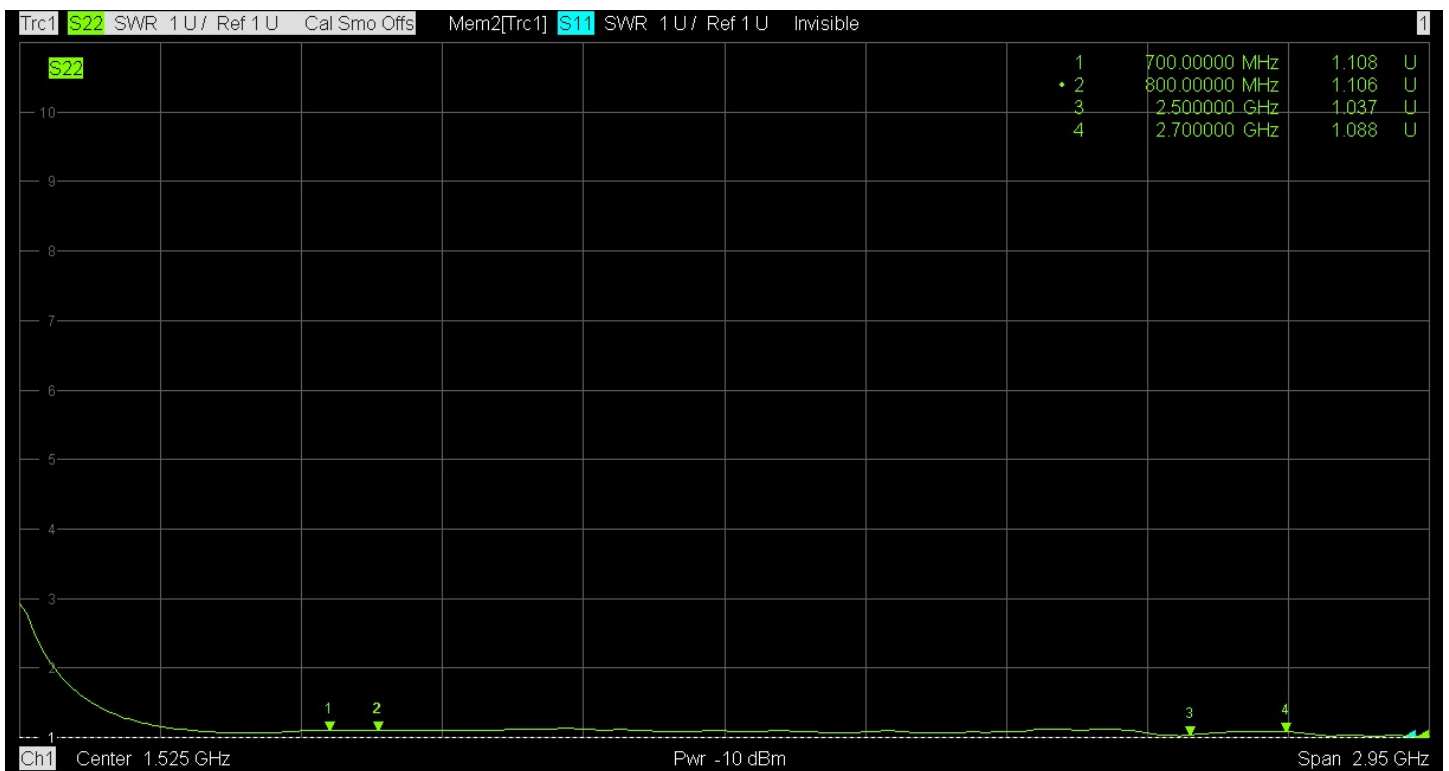
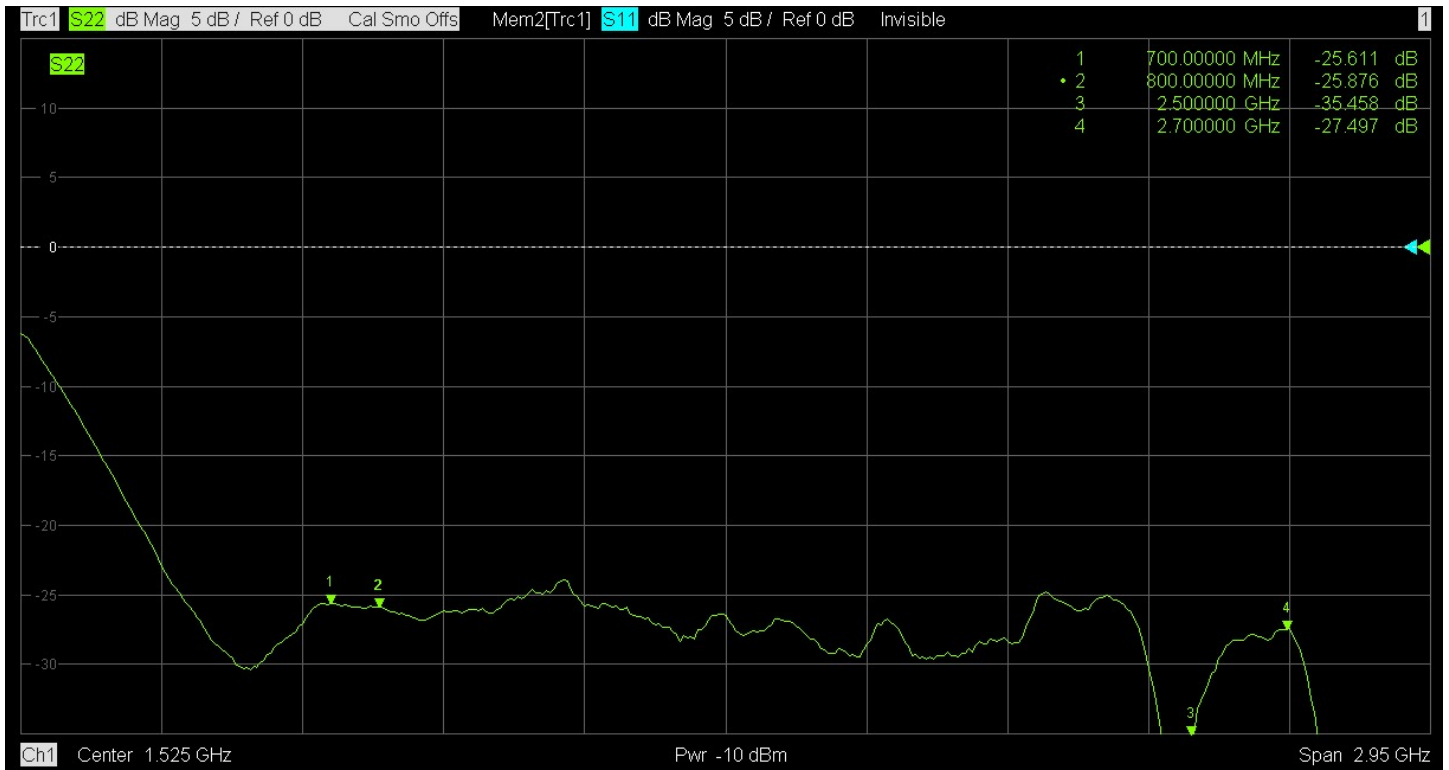


# S22

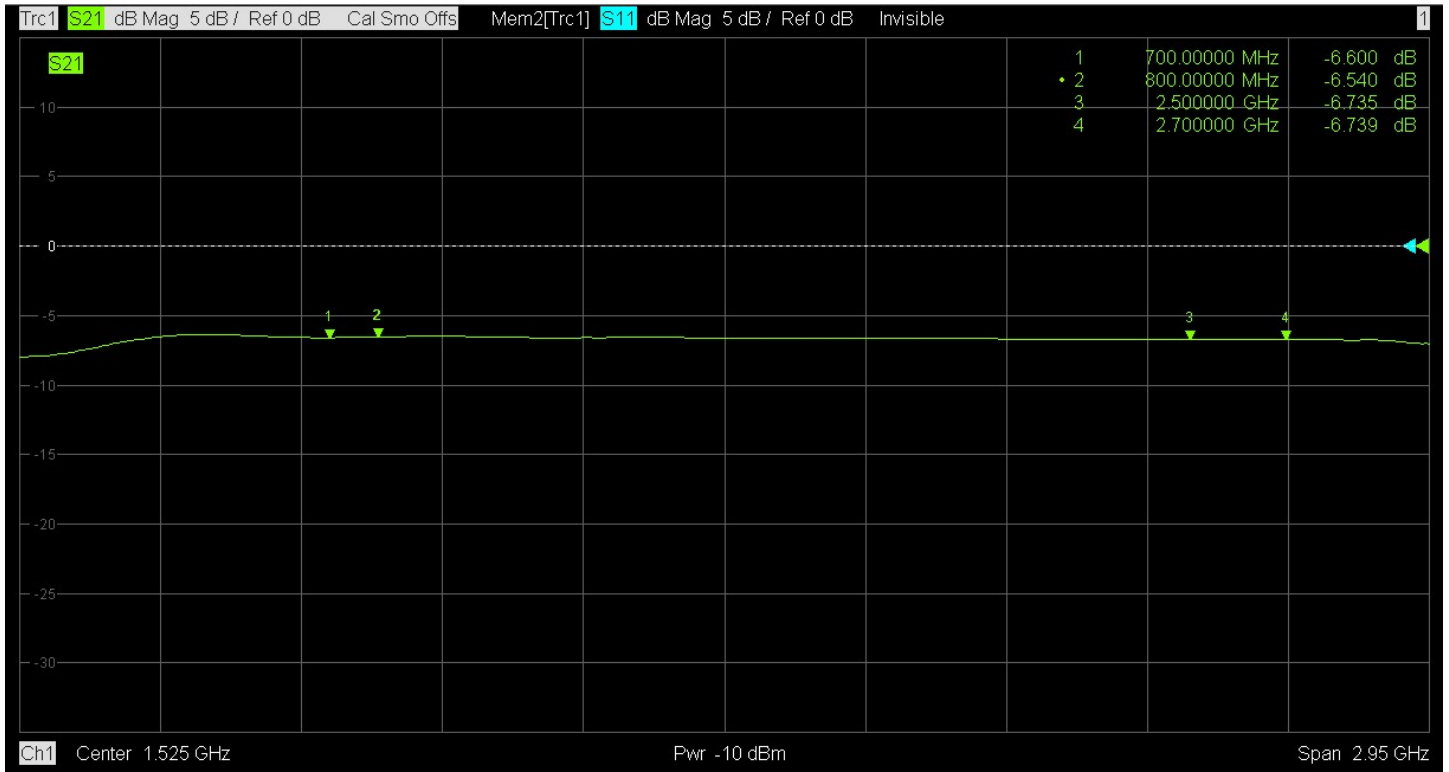




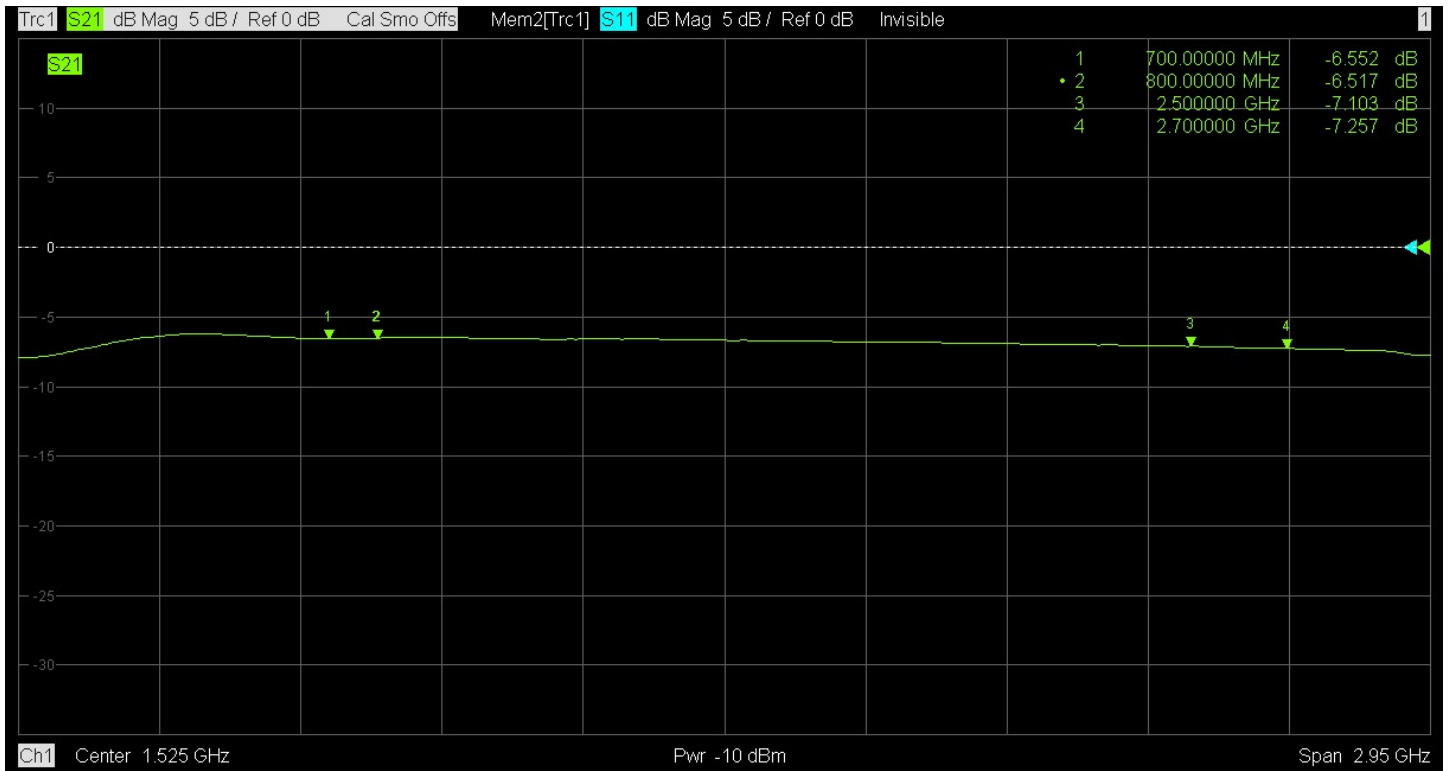




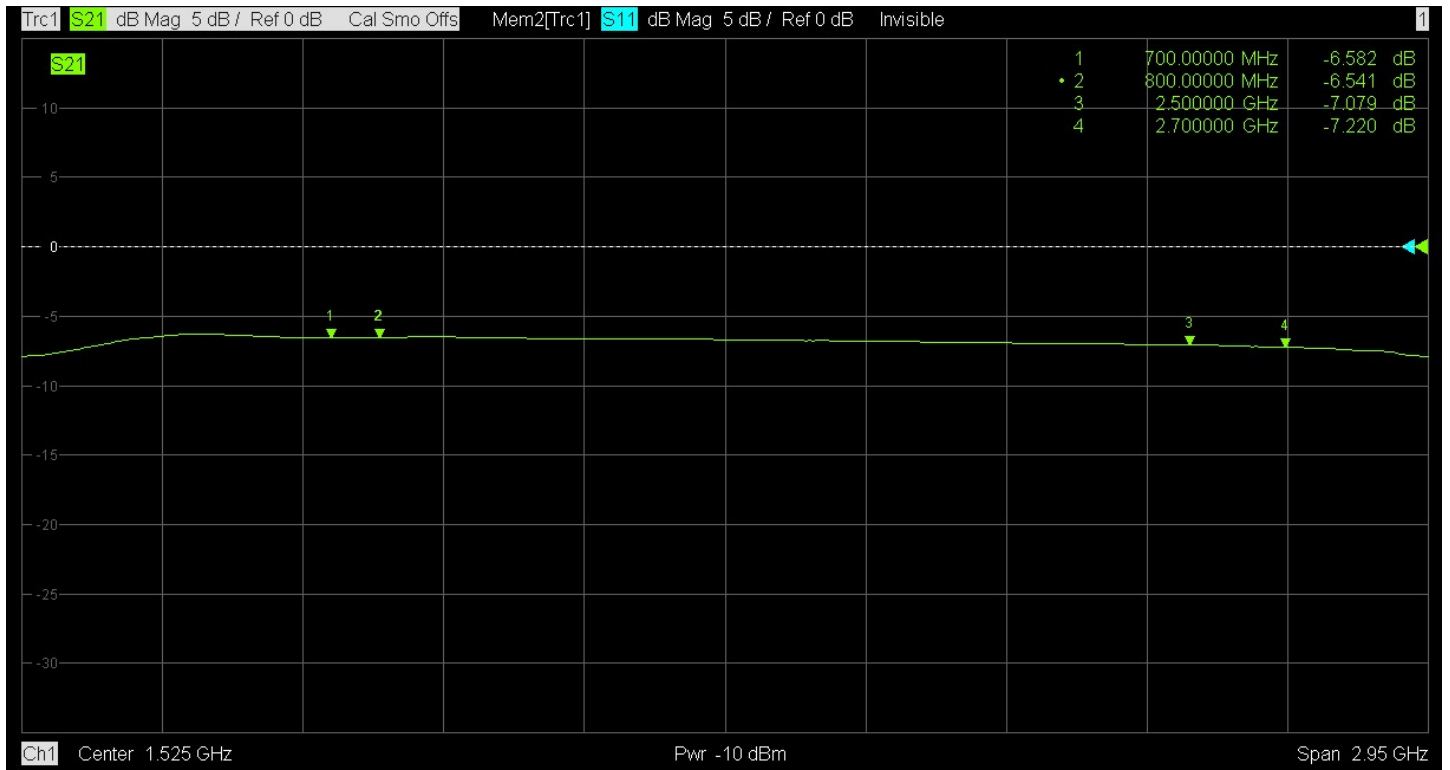
# S12



# S13



S14



S15

